

English



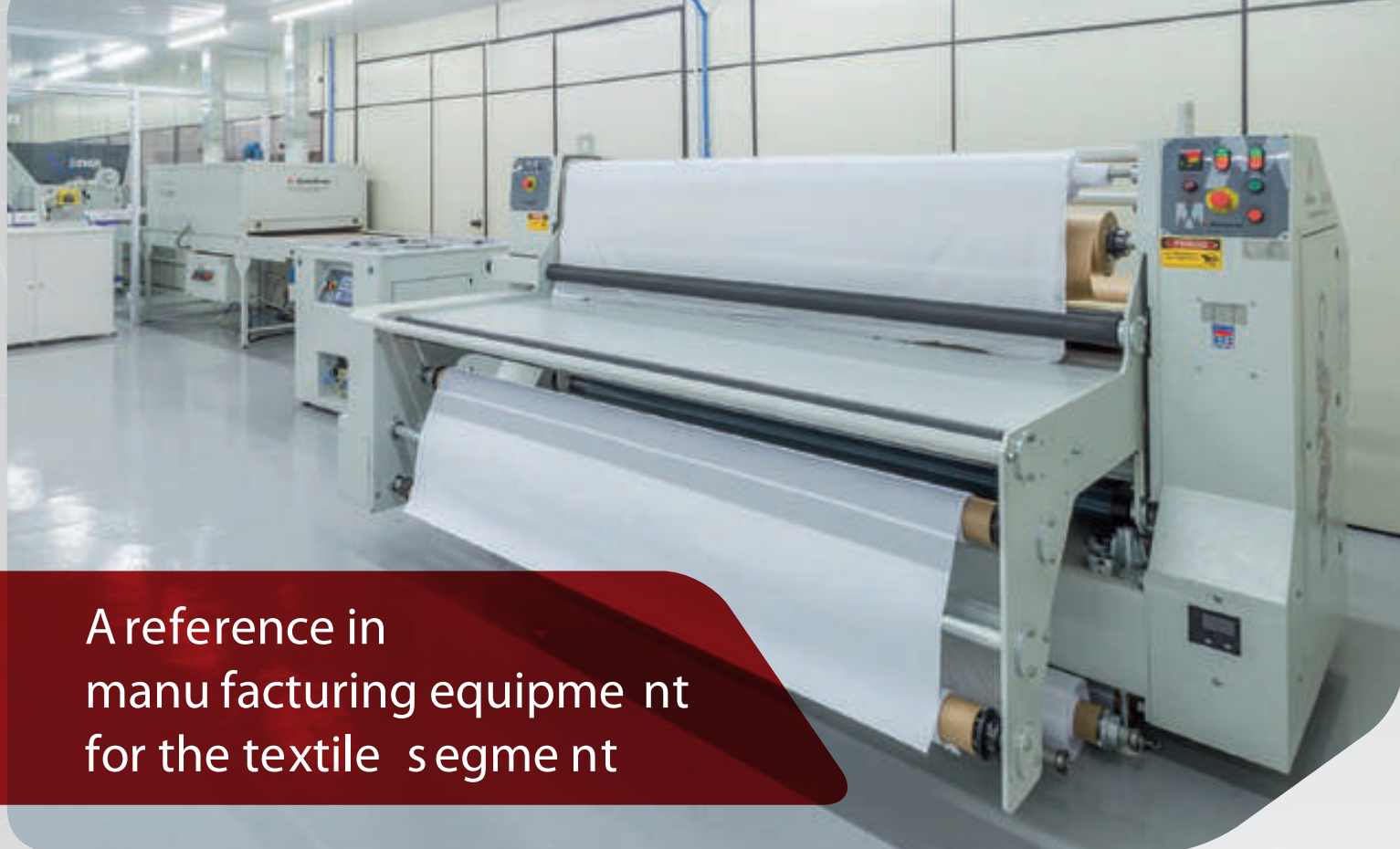
# Machine Catalogue



For more details, please contact :



Saudi Arabia Office  
Jeddah Prince Majed St.  
Tel: +966 12 673 4061  
Fax: +966 12 673 4312  
[www.goldenMarch.com](http://www.goldenMarch.com)  
[info@goldenmarch.com](mailto:info@goldenmarch.com)



## A reference in manufacturing equipment for the textile segment

Combined with high technology and technical quality, Metalnox is a reference in the textile stamping market offering a complete line of heat presses, calenders, folders, dryers, and digital printers for sublimation and printing directly to garment.

Ranging from customized mugs with printed photographs to digital printing for the textile industry, we have the expertise in manufacturing equipment to meet the needs of constantly developing markets.



Textile Calender

Metalnox employs 100% Brazilian technology and is a pioneer in Latin America and the third company to develop and manufacture direct printing garment, as well as supplying solutions focused on the textile stamping market.



Automatic Heat Press



Dryer



Manual Heat Press



## Technology and solutions for the textile industry in all manufacturing processes

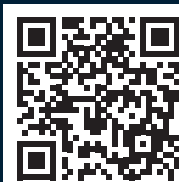
All Metalnox equipment is developed and manufactured in Brazil. The industrial unit is equipped with state-of-the-art infrastructure and technology, for complete development, design, and manufacturing.

We prioritize quality and performance in our products, for this reason, we invest in an integrated production process, highly trained employees, and a strict quality control system.



TAKE A VIRTUAL TOUR  
AND SEE OUR INFRASTRUCTURE

[www.metalnoxmaquinas.com.br/en](http://www.metalnoxmaquinas.com.br/en)



# Table of Contents

## CUSTOMIZATION HEAT PRESS

Magic Machine A4/A3.....05

Mug Heat Press - PCM 100.....06

## SMALL/MEDIUM SIZE FORMAT HEAT PRESSES

Sew Free - SF 130/300/PTA/PTS 12000 SUPER.....07

Automatic Label-Applying Press - PTR A 100/PTRA 100 PRO.....08

Manual Heat Press Praticer Line PLD 150.....09

Manual Heat Press Standard Line Single Platen - PTI 200/PTI 150/PTI 280/PTI 350/PT 600.....10

Manual Heat Press Standard Line Double Platen - PTI 200/PTI 150/PTI 280/PTI 350/PTI 600.....11

Manual Heat Press Excellence Line - ELI 150/ELI 230/ELI 280/ELI 350/ELI 600.....12

Manual Heat Press Excellence Line - EL 800.....13

Manual Heat Press Excellence Line - EL 900.....14

Semi-Automatic Heat Press - PTS 600/PTS 800/PTS 950 Basic Single.....15

Semi-Automatic and Automatic Heat Presses - PTA 700/PTS 700/PTA 850/PTS 850.....16

Embossing Presses - PES 300/PEA 350/PES 350.....17

Jeanswear Presses - PTI 550/PTI 650.....18

## LARGE SIZE FORMAT HEAT PRESSES

Semi-Automatic Heat Press ECO-PROFIT - PTS 950 BASIC/PTS 12000 BASIC.....19

Semi-Automatic and Automatic Heat Press ECO-PROFIT - PTA 950/PTS 950/PTA 8000/  
PTS 8000/PTA 12000/PTS 12000.....20

Semi-Automatic and Automatic Heat Press ECO-PROFIT - PTA 12000/PTS 12000 SUPER.....21

Semi-automatic Thermal Press with Compact Structure - PTS 12000 SMART.....22

Thermal Press for Large-Scale Productions - PTA 17000/PTS 17000.....23

Continuous Heat Press - PTC 2000.....24

## LARGE SIZE FORMAT CALENDERS

Continuous Multi-Function Calender - CMC 1800 S02.....25

Dual Multi-Function Calender - CMD 1800 .....26

Dual Multi-Function Calender - CMD 1800 S02.....28

## TURBO JET DRYERS

Turbo JET Dryers .....30

## FOLDING MACHINE

Folding Machine - MDM 280/ETM 150/ETM 250.....32

# Line for Customization Photo Products

## Magic Machine A3/A4

Versatile and multi-functional, the Magic Machine is a interchangeable heat press that is supplied with 4 types of platens: one flat platen, one cap platen, one dish platen and one cylindrical mug module. This machine is an excellent choice for those who are either investing on a new business or enlarging their product portfolio.

### Options

Sold separately.

Cap platen, dish platen, cylindrical mug module.

*Production of*  
+++MORE+++  
*More than 100*  
**PRODUCTS**



Cap platen



Dish platen



Cylindrical mug platen

Model	MM A3	MM A4	Dish		Cap		Mugs	
Mains voltage (V)	220	220	127	220	127	220	127	220
Rated power (kW)	1.5	1.1	0.35	0.35	0.13	0.13	0.4	0.4
Power consumption (kW/h)	0.6	0.4	0.14	0.14	0.08	0.08	0.18	0.18
Electric current (A)	6.8	5	2.7	1.6	0.5	0.6	3.1	1.8
Useful area (mm)	350 x 450	320 x 230	Ø140	Ø140	80 x 140	80 x 140	85 x 195	85 x 195
Useful area (in)	13,7" x 17,71"	12,59" x 9,05"	5.5"	5.5"	3,14" x 5,51"	3,14" x 5,51"	3,34" x 7,67"	3,34" x 7,67"
Weight (kg)	24.5 (MM A4)   26.5 (MM A3)							
Package (L x W x H mm)	700 x 470 x 560							

# Mug Heat Press

Indicated for confectioning customized photo-products like porcelain or plastic mugs, draft-beer mugs, squeeze, piggy banks, tooth-brush holders, soap holders, vases, and others. Being easy to handle and with low maintenance cost, it is available with a cylindrical module.

## PCM 100

Heat press for cylindrical mugs.



Model	PCM 100	
Mains voltage (V)	127	220
Rated power (kW)	0.4	0.4
Power consumption (kW/h)	0.22	0.22
Electric current (A)	3.15	1.8
Useful area (mm)	85 x 195	85 x 195
Useful area (in)	3,34" x 7,67"	3,34" x 7,67"
Net weight (kg)	4.4	
Gross weight (kg)	5.4	
Package (L x W x H mm)	360 x 240 x 280	



## Sew Free

With next generation “bonding” (Garment special bond) technology it's possible to develop underwear apparel, line beach wear, sportswear and much more. The result are garments become lighter and softer, with better fit and adjustment, providing more comfort and safety.



SF 130

This equipment is designed to pre-assemble the garment, which allows for revising it before its final fusing, thus assuring for only first-quality batches.



SF 300

This equipment has a device that allows for a better closure of free sewing garments. With three pressing areas of 30 x 440 mm, the garment is pressed on the thermal adhesive tape only, thus guaranteeing perfect melting and resistant seams. The same device allows for dressing those garment having sleeves or legs, thus allowing for pressing them at any point.



PTA/PTS 12000 SUPER

After the garment is pre-assembled, it needs to be fused, i.e. the thermal adhesive tape needs to penetrate the garment. For this purpose, the machine PTA/PTS 12000 Super was specially developed for the sew free process, in which it can be adapted to any production volume.

Model	SF 130	SF 300		PTA/PTS 12000 SUPER	
Mains voltage (V)	220 single-phase/bi-phase	220	127	220 3-phase	380 3-phase
Rated power (kW)	0.9	2.2	1.75	23.4	23.4
Power consumption (kW/h)	0.5	0.6	0.5	8.5	8.5
Electric current (A)	4	10	13.8	61.5	35.6
Useful area (mm)	29.5	400 x 500	400 x 500	1000 x 1470	1000 x 1470
Useful area (in)	1" <sup>5</sup> / <sub>32</sub>	15,74" x 19,68"	15,74" x 19,68"	39,37" x 57,87"	39,37" x 57,87"
Air consumption (cu.ft/min)	0.3 / 8.0	1.2 / 34	1.2 / 34	6.7 / 190	6.7 / 190
Indicated compressor (cu.ft/min)	3.7	5.2	5.2	15	15
Weight (kg)	202	127		995	
Package (L x W x H mm)	900 x 1390 x 1320	900 x 550 x 1357		2040 x 2890 x 1600	

# Label Application

The PTR 100 ER is an easy to handle and highly productive model that applies labels in rolls by means of compression. The pressing operation is facilitated due to its pneumatic system that makes the work much more practical and causes less fatigue to the operator. The machine also has selector switch with lock that enables reliable maintenance.

that applies labels in rolls by means of

compression. The pressing operation is facilitated due to its pneumatic system that makes the work much more practical and causes less fatigue to the operator. The machine also has selector switch with lock that enables reliable maintenance.



## PTR 100 PRO

This label-applying machine works with label sizes up to 100 x 100 mm. The great differential of this machine is its laser-beam workpiece alignment system, which accurately positions the label.



## PTR 100

Not fitted with the work piece centering laser beam.



Label driving system much faster in displacement and more accurate in the positioning for application.



Quick machine setup by adjusting the coil width with a handle screw.



Control system with accurate adjustment controls and actuation alternator.



Examples of label applications on several types of fabrics and garment models.

Model	PTR 100		PTR 100 PRO	
Mains voltage (V)	127	220	127	220
Rated power (kW)	0.4	0.4	0.4	0.4
Power consumption (kW/h)	0.2	0.2	0.2	0.2
Electric current (A)	3.15	1.81	3.15	1.81
Useful area (mm)	100 x 100	100 x 100	100 x 100	100 x 100
Useful area (in)	3,93" x 3,93"	3,93" x 3,93"	3,93" x 3,93"	3,93" x 3,93"
Air consumption (cu.ft/min)	0.30/8	0.30/8	0.30/8	0.30/8
Indicated compressor (cu.ft/min)	3.7	3.7	3.7	3.7
Net weight (kg)	45.6		45.6	
Gross weight (kg)	52		52	
Package (L x W x H mm)	690 x 500 x 740		690 x 500 x 740	

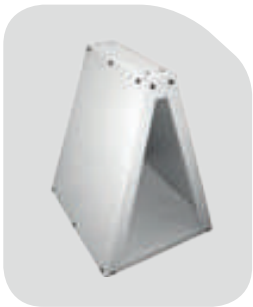


# Praticer Line

Light-weight, agile and practical model indicated for small applications , such as: thermo-adhesive labels, strass and sublimations. The Praticer Line for small formats is designed with the swing-away system that requires less physical strain from the operator and makes it extremely practical. This equipment allows for dressing the garment on the lower plate.



Examples of strass and sublimation applications.



Optional base.

Model	PLD 150	
Mains voltage (V)	127	220
Rated power (kW)	0.5	0.5
Power consumption (kW/h)	0.21	0.21
Electric current (A)	3.9	2.3
Useful area (mm)	150 x 150	150 x 150
Useful area (in)	5,90" x 5,90"	5,90" x 5,90"
Net weight (kg)	25	25
Gross weight (kg)	30	30
Package (L x W x H mm)	550 x 500 x 630	

## Standard Line

Conventional equipment for heat transfer, available in several sizes to meet all requirements. Being manually actuated, the Standard Line is indicated for professional applications, label transfers, Thermo-adhesive embroideries and print finishing. The plate-exchangeable version offers the convenience of adapting a concave platen to print caps. Equipment available in versions with Single and Double Platen.

### PTI - single platen

(One heat platen + one cold platen)



Example of application on sportswear.

### Optionals

Sold separately.



Flat platen  
(other sizes).



Cap platen.

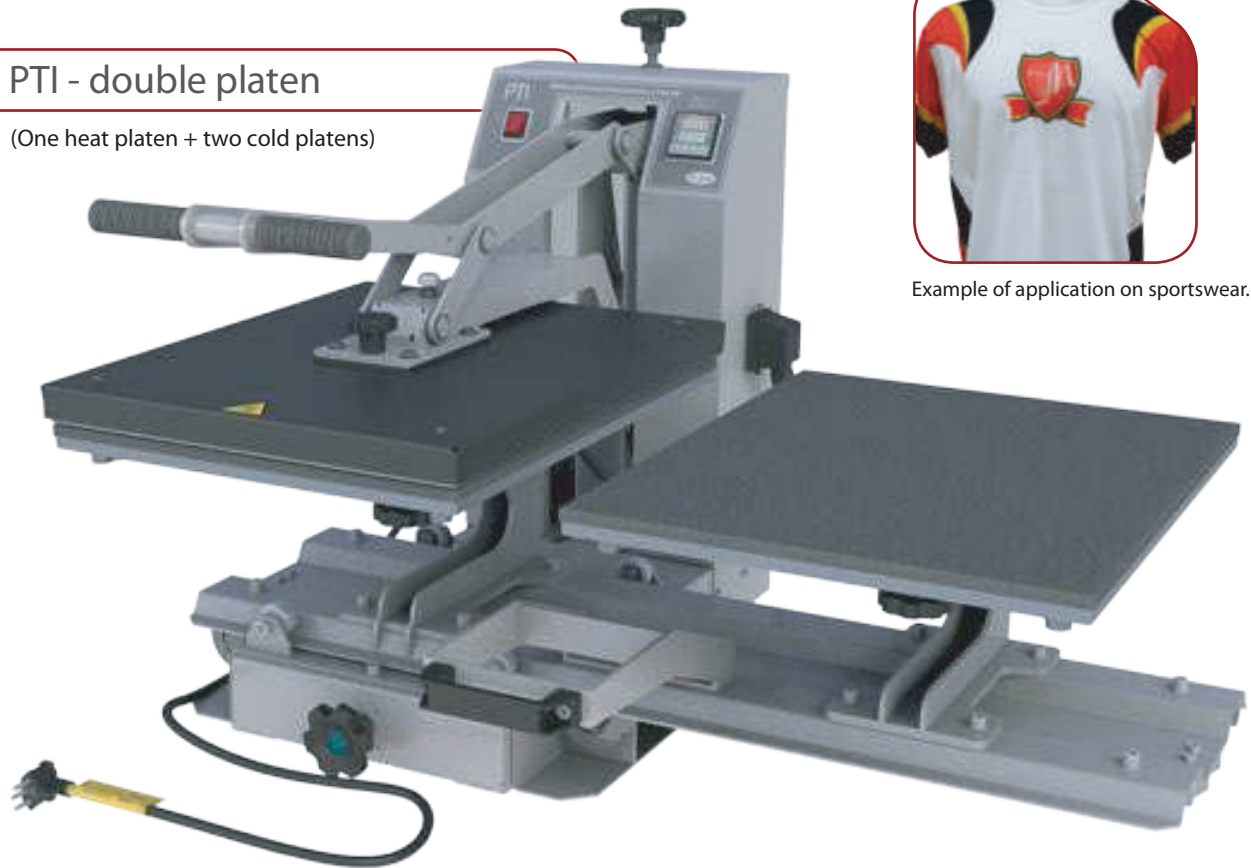


Base.

Model (single platen)	PTI 200 (cap)		PTI 150		PTI 280		PTI 350		PTI 600	
Mains voltage (V)	127	220	127	220	127	220	127	220	127	220
Rated power (kW)	0.5	0.5	0.5	0.5	1.75	1.75	1.75	2	1.75	2.2
Power consumption (kW/h)	0.27	0.27	0.27	0.27	0.46	0.46	0.76	0.84	0.76	0.93
Electric current (A)	3.9	2.3	3.9	2.3	13.8	8	13.8	9.1	13.8	10
Useful area (mm)	80 x 140	80 x 140	150 x 150	150 x 150	380 x 280	380 x 280	350 x 450	350 x 450	400 x 500	400 x 500
Useful area (in)	3,14" x 5,51"	3,14" x 5,51"	5,90" x 5,90"	5,90" x 5,90"	14,96" x 11,02"	14,96" x 11,02"	13,7" x 17,71"	13,7" x 17,71"	15,74" x 19,68"	15,74" x 19,68"
Net weight (kg)	33		34		43		48		54	
Gross weight (kg)	46		47		56		61		67	
Package (L x W x H mm)	880 x 500 x 720		880 x 500 x 720		880 x 500 x 720		880 x 500 x 720		880 x 500 x 720	

## PTI - double platen

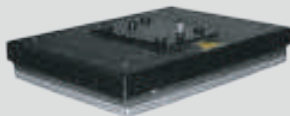
(One heat platen + two cold platens)



Example of application on sportswear.

## Optionals

Sold separately.



Flat platen (other sizes).



Cap platen.



Base.

Model (double platen)	PTI 200 (cap)		PTI 150		PTI 280		PTI 350		PTI 600	
Mains voltage (V)	127	220	127	220	127	220	127	220	127	220
Rated power (kW)	0.5	0.5	0.5	0.5	1.75	1.75	1.75	2	1.75	2.2
Power consumption (kW/h)	0.27	0.27	0.27	0.27	0.46	0.46	0.76	0.84	0.76	0.93
Electric current (A)	3.9	2.3	3.9	2.3	13.8	8	13.8	9.1	13.8	10
Useful area (mm)	80 x 140	80 x 140	150 x 150	150 x 150	380 x 280	380 x 280	350 x 450	350 x 450	400 x 500	400 x 500
Useful area (in)	3,14" x 5,51"	3,14" x 5,51"	5,90" x 5,90"	5,90" x 5,90"	14,96" x 11,02"	14,96" x 11,02"	13,7" x 17,71"	13,7" x 17,71"	15,74" x 19,68"	15,74" x 19,68"
Net weight (kg)	64		66		78		85		93	
Gross weight (kg)	102		104		116		123		131	
Package (L x W x H mm)	940 x 1040 x 800		940 x 1040 x 800		940 x 1040 x 800		940 x 1040 x 800		940 x 1040 x 800	



## Excellence Line

Strong, agile and practical, this model is indicated for professional applications requiring high productivity and transfer quality. This manual heat press is designed with the swing-away system that requires less physical strain from the operator, and allows the workpiece to be dressed over the lower platen.

This range features thermal platens from 15 x 15 cm up to 40 x 50 cm.

### ELI 600

Platen exchangeable heat press.



Sold separately.



Flat platen  
(other sizes).



Cap platen.



Dish platen.



Base.



Example of application on sportswear.

Model	Dish Platen		Cap Platen	
Mains voltage (V)	127	220	127	220
Rated power (kW)	0.35	0.35	0.5	0.5
Power consumption (kW/h)	0.14	0.14	0.27	0.27
Electric current (A)	2.7	1.6	3.9	2.3
Useful area (mm)	Ø140	Ø140	80 x 140	80 x 140
Useful area (in)	5.5" x 5.5"	5.5" x 5.5"	3,14" x 5,51"	3,14" x 5,51"
Net weight (kg)	34.5	34.5	28	28
Gross weight (kg)	40	40	33	33
Package (L x W x H mm)	800 x 590 x 650		800 x 590 x 650	

Model	ELI 150		ELI 230		ELI 280		ELI 280 (Embossing)		ELI 350		ELI 600	
Mains voltage (V)	127	220	127	220	127	220	127	220	127	220	127	220
Rated power (kW)	0.5	0.5	1.5	1.5	1.75	1.75	1.75	1.75	1.75	2	1.75	2.2
Power consumption (kW/h)	0.27	0.21	0.44	0.44	0.46	0.46	0.46	0.46	0.46	0.46	0.46	0.59
Electric current (A)	3.9	2.3	11.8	6.8	13.8	8	13.8	8	13.8	9.1	13.8	10
Useful area (mm)	150 x 150	150 x 150	320 x 230	320 x 230	380 x 280	380 x 280	380 x 280	380 x 280	350 x 450	350 x 450	400 x 500	400 x 500
Useful area (in)	5,90" x 5,90"	5,90" x 5,90"	12,59" x 9,05"	12,59" x 9,05"	14,96" x 11,02"	14,96" x 11,02"	14,96" x 11,02"	14,96" x 11,02"	13,7" x 17,71"	13,7" x 17,71"	15,74" x 19,68"	15,74" x 19,68"
Net weight (kg)	29	29	31	31	36	36	36	36	42	42	46	46
Gross weight (kg)	34	34	36	36	41	41	41	41	47	47	51	51
Package (L x W x H mm)	800 x 590 x 650		800 x 590 x 650		800 x 590 x 650		590 x 510 x 640		800 x 590 x 650		800 x 590 x 650	

# Excellence Line

The EL 800 is a versatile manually actuated model, indicated for sublimation of shorts, fitness wear, flags, uniforms, T-shirts and others. The lower platen opens like a drawer, which makes it easy to handle the work pieces. It has a strength enhancing system that requires less physical strain from the operator and its temperature is electronically controlled, thus assuring consistent transferred colors.



Examples of applications on sportswear.



Optional base. Sold separately.

Model	EL 800		
Mains voltage (V)	220 single-phase	220 bi-phase	127 single-phase
Rated power (kW)	5	5	3
Power consumption (kW/h)	1.5	1.5	1.2
Electric current (A)	22.7	22.7	23.6
Useful area (mm)	520 x 720	520 x 720	520 x 720
Useful area (in)	20,47" x 28,34"	20,47" x 28,34"	20,47" x 28,34"
Net weight (kg)	90	90	90
Gross weight (kg)	110	110	110
Package (L x W x H mm)	850 x 850 x 680		

## Excellence Line

The heat press EL 900 is an industrial model that has been developed to obtain a higher productivity in sublimation transfer application.

The EL 900 model is an excellent option for those who are looking for a high productive performance and great cost-benefit.

The bottom platen has front open system (drawer system), resulting in an easy operation and ergonomic equipment.

EL 900 machine has aluminum-fused resistance and two digital time and temperature controllers, ensuring the uniformity of the temperature on the heat plate, getting as a result one excellent sublimation transfer application.

EL 900



Examples of applications on sportswear.



### WORK WITH:



■ Decoration



■ Fashion/  
Fitness line



■ Visual communication

Model	EL 900	
Mains voltage (V)	220 single-phase	220 bi-phase
Rated power (kW)	9.4	9.4
Power consumption (kW/h)	7.5	7.5
Electric current (A)	42.7	42.7
Useful area (mm)	700 x 1100	700 x 1100
Useful area (in)	27,5" x 43,3"	27,5" x 43,3"
Net weight (kg)	225	225
Gross weight (kg)	295	295
Package (L x W x H mm)	1190 x 1120 x 820	



# Semi-Automatic Heat Press

Easy to handle and low-maintenance models developed for sublimation on sportswear, ladies wear, fitness and uniforms in general. Its strong frame and pneumatic cylinder simplify the operator's process and provide a significant increase of productivity.



Examples of applications on sportswear.

PTS 950  
Basic Single



PTS 600



PTS 800



The exclusive MTC (Multiple Temperature Control) is responsible for granting maximum quality to your prints. It performs an even distribution of the heat to the entire useful area of the thermal platen without wasting the process power, maintaining color consistency and low costs.

Model	PTS 600		PTS 800	PTS 950 Basic Single		
Mains voltage (V)	127	220	220 single-phase/bi-phase	220 3-phase	380 3-phase	220 single-phase/bi-phase
Rated power (kW)	1.75	2.2	5	9.4	9.4	9.4
Power consumption (kW/h)	0.49	0.59	2.5	4.6	4.6	7.5
Electric current (A)	13.8	10	22.7	24.6	14.3	42.7
Useful area (mm)	400 x 500	400 x 500	520 x 720	700 x 1100	700 x 1100	700 x 1100
Useful area (in)	15,74" x 19,68"	15,74" x 19,68"	20,47" x 28,34"	27,5" x 43,3"	27,5" x 43,3"	27,5" x 43,3"
Air consumption (cu.ft/min)	3.0/85	3.0/85	3.0/85	2.2/60	2.2/60	2.2/60
Indicated compressor (cu.ft/min)	5.2	5.2	5.2	5.2	5.2	5.2
Net weight (kg)	116	116	140	255	255	255
Gross weight (kg)	133	133	190	325	325	325
Package (L x W x H mm)	900 x 550 x 1360		960 x 890 x 1350		1290 x 1140 x 1550	

## Automatic and Semi-Automatic Heat Press

Pneumatic models fitted with two platens, indicated for large-size sublimations on sportswear, fitness wear and general men's and ladies wear. While one piece is being pressed, the next one can be prepared, thus speeding up the process. Like the rest of Metalnox machines, this model has two teflon-coated heat plates capable of applying uniform pressure and temperature over the entire contact surface and is designed to dress the garment over the lower plate.



Examples of applications on sportswear.



Model	PTA 700	PTS 700	PTA 850	PTS 850
Mains voltage (V)	220 single-phase/bi-phase	220 single-phase/bi-phase	220 single-phase/bi-phase	220 single-phase/bi-phase
Rated power (kW)	3.2	3.2	5	5
Power consumption (kW/h)	1.5	1.5	2.5	2.5
Electric current (A)	14.5	14.5	22.5	22.5
Useful area (mm)	400 x 500	400 x 500	520 x 720	520 x 720
Useful area (in)	15,74" x 19,68"	15,74" x 19,68"	20,47" x 28,34"	20,47" x 28,34"
Air consumption (cu.ft/min)	3.9/110	3.0/85	3.9/100	3.0/85
Indicated compressor (cu.ft/min)	5.2	5.2	5.2	5.2
Net weight (kg)	150	150	176	176
Gross weight (kg)	210	210	265	265
Package (L x W x H mm)	1540 x 940 x 1350	1540 x 940 x 1350	1540 x 1040 x 1350	1540 x 1040 x 1350

# Embossing

We offer a wide range of 2 in 1 embossing presses , which can be either actuated manually (PLE 280), automatically (PEA 350) or semi-automatically (PES 300 and 350). Being designed to apply high and low-relief prints and effects on fabrics like cotton, synthetics and leather, all machines of this range are designed to dress the garment over the lower plate, which assures higher productivity rates.

## PEA/ PES 350

Fitted with  
double trays



## PES 300



Example of high and  
low relief applications  
(embossing).

Model	PES 300		PEA/PES 350	
Mains voltage (V)	127	220	220 single-phase	220 bi-phase
Rated power (kW)	1.75	2.2	3.2	3.2
Power consumption (kW/h)	0.49	0.59	1.5	1.5
Electric current (A)	13.8	10	14.5	14.5
Useful area (mm)	400 x 500	400 x 500	400 x 500	400 x 500
Useful area (in)	15,74" x 19,68"	15,74" x 19,68"	15,74" x 19,68"	15,74" x 19,68"
Air consumption (cu.ft/min)	3.0/85	3.0/85	3.9/110	3.0/85
Indicated compressor (cu.ft/min)	5.2	5.2	5.2	5.2
Gross weight (kg)	133	133	210	210
Net weight (kg)	116	116	150	150
Package (L x W x H mm)	900 x 540 x 1230		1540 x 940 x 1350	



## Heat Press for Jeanswear

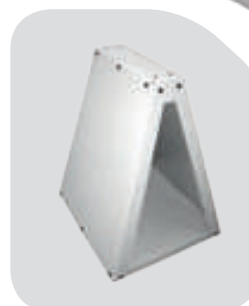
Developed to applying prints and effects on jeans , this machine is designed with a basic frame, double Teflon-coated platens and manual actuation. The PTI 650 and 550 models are plate-exchangeable, allowing it to change the concave form with a 35 x 45 cm-flat platen.



PTI 550



PTI 650



Optional base. Sold separately.

Model	PTI 550		PTI 650	
Mains voltage (V)	127	220	127	220
Rated power (kW)	1.5		1.5	
Power consumption (kW/h)	0.65		0.65	
Electric current (A)	11.8	6.8	11.8	6.8
Useful area (mm)	210 x 450		210 x 450	
Useful area (in)	8,26" x 17,71"		8,26" x 17,71"	
Air consumption (cu.ft/min)	Manual actuation			
Net weight (kg)	47		83	
Gross weight (kg)	60		121	
Package (L x W x H mm)	720 x 500 x 880		800 x 1040 x 940	

# ECO-PROFIT BASIC

Metalnox Machines brings to the market a heat press with compact and simplified structure, with useful area of 1000 x 1470 mm with uniform temperature assurance. Suitable for large format sublimation, the PTS 12000 Basic in an equipment designed for large productions with the best cost benefit.

## PTS 12000 BASIC



The exclusive MTC (Multiple Temperature Control) is responsible for granting maximum quality to your prints. It performs an even distribution of the heat to the entire useful area of the thermal platen without wasting the process power, maintaining color consistency and low costs.



Examples of applications on sportswear.



Model	PTS 950 BASIC			PTS 12000 BASIC		
Mains voltage (V)	220 3-phase	380 3-phase	220 single-phase/bi-phase	220 single-phase/bi-phase	220 3-phase	380 3-phase
Rated power (kW)	9.4	9.4	9.4	18.4	23.4	23.4
Power consumption (kW/h)	4.6	4.6	7.5	10.0	8.5	8.5
Electric current (A)	24.6	14.3	42.7	83.6	61.5	35.6
Useful area (mm)	700 x 1100	700 x 1100	700 x 1100	1000 x 1470	1000 x 1470	1000 x 1470
Useful area (in)	27,5" x 43,3"	27,5" x 43,3"	27,5" x 43,3"	39,37" x 57,87"	39,37" x 57,87"	39,37" x 57,87"
Air consumption (cu.ft/min)	2.2	2.2	2.2	3.8	3.8	3.8
Indicated compressor (cu.ft/min)	5.2	5.2	5.2	10	10	10
Machine's weight (kg)	325	325	325	750	750	750
Package (L x W x H mm)	1120 x 1990 x 1500			2534 x 2210 x 1550		

# Semi-Automatic and Automatic Heat Press ECO-PROFIT

Range of heat presses indicated for sublimation capable of consistent pressure and controlled temperature distribution.

PTA/PTS 12000



Examples of applications on Sportswear.

**Eco  
PROFIT**

PTA/PTS 950



PTA/PTS 8000



The exclusive MTC (Multiple Temperature Control) is responsible for granting maximum quality to your prints. It performs an even distribution of the heat to the entire useful area of the thermal platen without wasting the process power, maintaining color consistency and low costs.



**Vacuum System**  
Metalnox offers a pioneer option designed to prevent the transfer paper from becoming stained or from causing shadows on the fabric upon removal of the paper from the press.

Model	PTA/PTS 950		PTA/PTS 8000		PTA/PTS 12000	
Mains voltage (V)	220 3-phase	380 3-phase	220 3-phase	380 3-phase	220 3-phase	380 3-phase
Rated power (kW)	12.5	12.5	15.8	15.8	23.4	23.4
Power consumption (kW/h)	4.2	4.2	5.2	5.2	8.5	8.5
Electric current (A)	33.7	19	41.6	24	61.5	35.6
Useful area (mm)	700 x 1100	700 x 1100	850 x 1100	850 x 1100	1000 x 1470	1000 x 1470
Useful area (in)	27,5" x 43,3"	27,5" x 43,3"	33,46" x 43,3"	33,46" x 43,3"	39,37" x 57,87"	39,37" x 57,87"
Air consumption (cu.ft/min)	2.2/60	2.2/60	4.5/125	4.5/125	4.8/135	4.8/135
Indicated compressor (cu.ft/min)	5.2	5.2	7.2	7.2	10	10
Net weight (kg)	425	425	450	450	818	818
Gross weight (kg)	580	580	600	600	1010	1010
Package (L x W x H mm)	2340 x 1540 x 1560		2700 x 1640 x 1600		2900 x 2040 x 1600	



# ECO-PROFIT SUPER

The PTA/PTS 12000 model is designed with a stronger pressing system, allowing it to perform other kinds of printing than just sublimation, such as: lithographic, puff, strass, hot stamp, foil, and others.

PTA/PTS 12000  
SUPER



Eco  
PROFIT



Examples of strass and sublimation applications.



The exclusive MTC (Multiple Temperature Control) is responsible for granting maximum quality to your prints. It performs an even distribution of the heat to the entire useful area of the thermal platen without wasting the process power, maintaining color consistency and low costs.



## Vacuum System

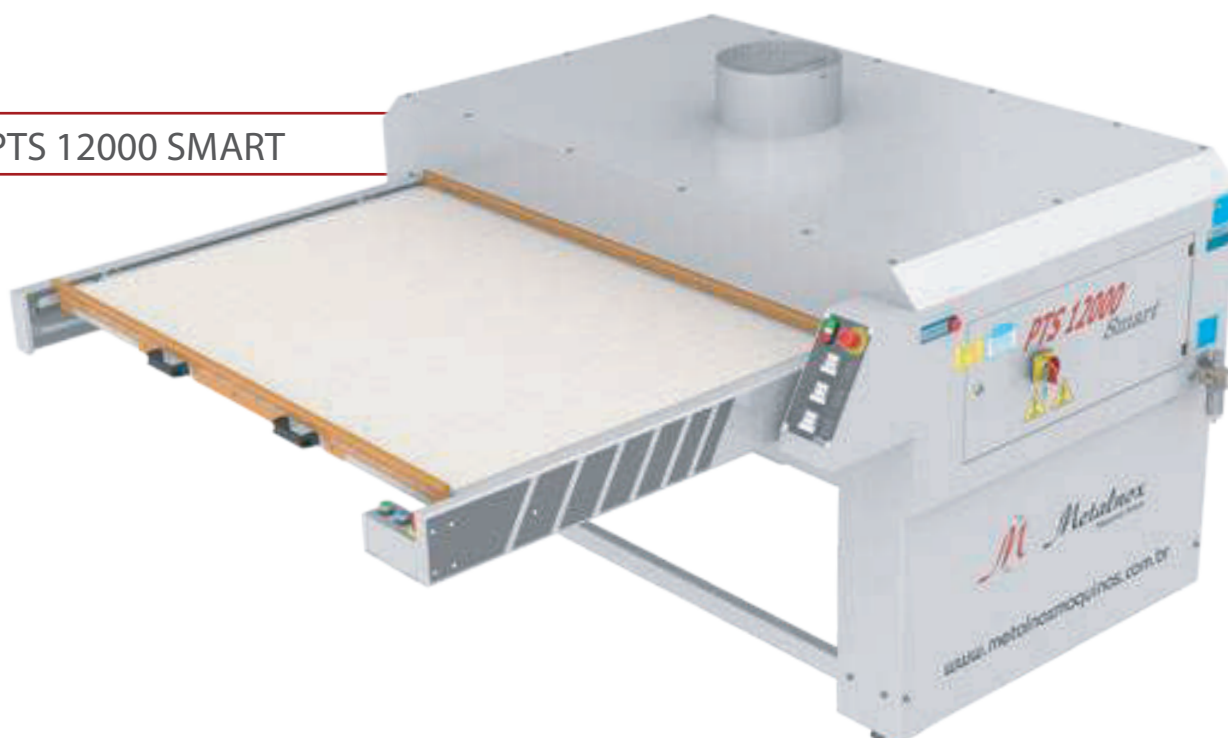
Metalnox offers a pioneer option designed to prevent the transfer paper from becoming stained or from causing shadows on the fabric upon removal of the paper from the press.

Model	PTA/PTS 12000 SUPER	
Mains voltage (V)	220 3-phase	380 3-phase
Rated power (kW)	23.4	23.4
Power consumption (kW/h)	8.5	8.5
Electric current (A)	61.5	35.6
Useful area (mm)	1000 x 1470	1000 x 1470
Useful area (in)	39,37" x 57,87"	39,37" x 57,87"
Air consumption (cu.ft/min)	6.7/190	6.7/190
Indicated compressor (cu.ft/min)	15	15
Net weight (kg)	820	820
Gross weight (kg)	995	995
Package (L x W x H mm)	2890 x 2040 x 1600	

## Semi-Automatic Heat Press with a Compact Structure

The compact structure of the PTS 12000 Smart with a 30% reduced space requirement in the overall size of the machine decreases occupied space. It assures uniform temperature, so this equipment will optimize your process, working with only one operation. Models are equipped with overlapping trays (two trays), ideal for large formats, recommended only for sublimation.

PTS 12000 SMART



- Compact
- Ideal for small spaces
- Requires only one operator
- Consumes less power

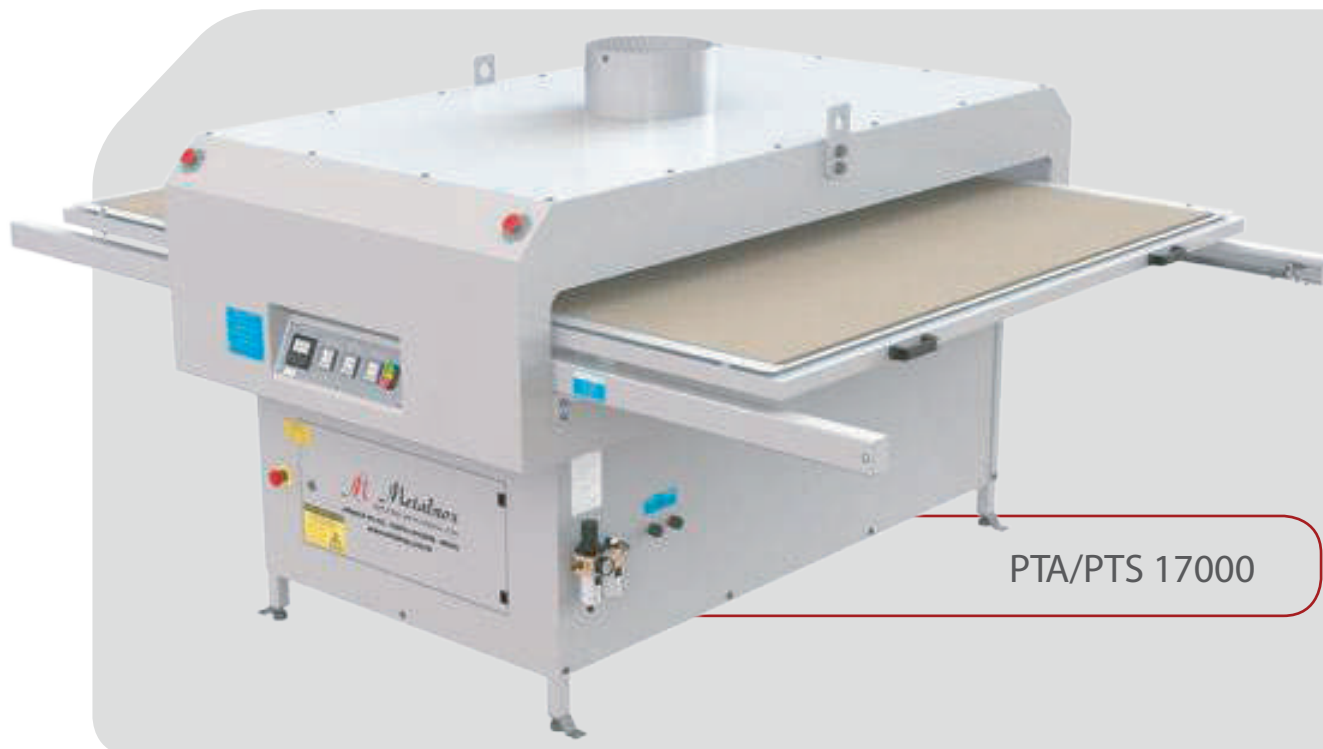


Examples of applications in sportswear, costumes, and decoration.

Model	PTS 12000 SMART		
	220 single-phase/bi-phase	220 3-phase	380 3-phase
Mains voltage (V)	220 single-phase/bi-phase	220 3-phase	380 3-phase
Rated power (kW)	18.4	18.4	18.4
Power consumption (kW/h)	10	7.3	7.3
Electric current (A)	83.6	48.3	28
Useful area (mm)	1000 x 1470	1000 x 1470	1000 x 1470
Useful area (in)	39,37" x 57,87"	39,37" x 57,87"	39,37" x 57,87"
Air consumption (cu.ft/min)	4.8	4.8	4.8
Indicated compressor (cu.ft/min)	10	10	10
Machine's weight (kg)	800	800	800
Package (L x W x H mm)	2500 x 2200 x 1600	2500 x 2200 x 1600	2500 x 2200 x 1600

# Heat Press for Large-Scale Productions

The PTA/PTS 17000 is ideal for large formats, recommended only for sublimation. There are completely automatic and semi-automatic versions. With an area of 1700 x 1000 mm and an extremely powerful pressing system, including 3 temperature control points, it assures uniformity in all the pieces.



PTA/PTS 17000



Examples of applications in sportswear and decoration.

Model	PTA/PTS 17000	
Mains voltage (V)	220 3-phase	380 3-phase
Rated power (kW)	23.4	23.4
Power consumption (kW/h)	8.5	8.5
Electric current (A)	61.5	35.6
Useful area (mm)	1700 x 1000	1700 x 1000
Useful area (in)	66,92" x 39,37"	66,92" x 39,37"
Air consumption (cu.ft/min)	6.7	6.7
Indicated compressor (cu.ft/min)	15	15
Net weight (kg)	950	950
Gross weight (kg)	1150	1150
Package (L x W x H mm)	2900 x 2400 x 1600	2900 x 2400 x 1600

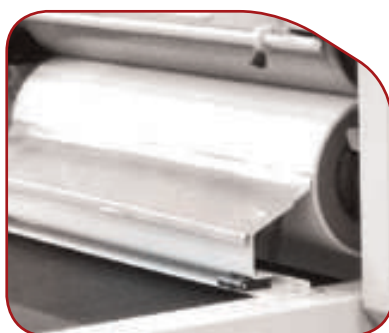
## Continuous Heat Press

Created based on Metalnox heat press technology and, in order to increase productivity, this project has been developed and executed in compliance with international quality standards. The PTC 2000 is fitted with an electronic temperature controller that assures quality consistency, and is capable of optimizing the production by means of a 2-meter long heating field. In addition, it is fitted with top and bottom Teflon or felt conveyor and top opening for maintenance and cleansing of the conveyor belts.

PTC 2000



Pressure-adjustment device



Heat distribution by means of electrical resistance



Variable-speed drive

Model	PTC 2000	
Mains voltage (V)	220 3-phase	380 3-phase
Rated power (kW)	18.3	18.3
Power consumption (kW/h)	8.5	8.5
Electric current (A)	48.1	27.9
Useful width (mm)	750	750
Useful width (in)	29,52"	29,52"
Net weight (kg)	860	860
Gross weight (kg)	1070	1070
Package (L x W x H mm)	4950 x 1540 x 1620	



# Continuous Calender CMC 1800 **S02**

A new version of equipment, more agile and productive, the CMC 1800 S02 , is prepared to meet large production demands with the best cost-benefit in the market . With safety switch, meter counter and UPS system, it is a high-tech equipment for sublimation of fabric rolls up to 1.70 m wide and without limitation on tubes diameter which represents greater flexibility in the machine setup.

## Efficiency and High Productivity

CMC 1800 **S02**



### Check out the distinctive features of the new version

- Fabric unwinder with two support rollers. Tubes without diameter limitation which represents greater flexibility in the machine setup.
- Simplified maintenance.
- Diagram passage that allows the operator to view the fabric already sublimated.
- Possibility of using the transfer roller directly from the Metalnox sublimation printer ePrint.
- Improved design.

Model	CMC 1800 Serie 02	
Mains voltage (V)	220 3-phase	380 3-phase
Rated power (kW)	27.8	27.8
Power consumption (kW/h)	13.5	13.5
Electric current (A)	73.0	42.3
Useful area (mm)	1700	1700
Useful area (in)	66,92"	66,92"
Air consumption (cu.ft/min)	1/28.3	1/28.3
Indicated compressor (cu.ft/min)	3.7	3.7
Net weight (kg)	1616	1616
Gross weight (kg)	1930	1930
Package (W x L x H mm)	1790 x 3040 x 1890	

## Dual Multi-Function Calender CMD 1800

Developed for sublimation of fabrics in rolls up to a width of 1.70 m and cutout pieces, the range of Metalnox calenders obeys the same quality standards of pressure and temperature as the conventional heat presses, thus assuring for sharp and consistent colors upon each application. A great differential on the Metalnox CMD-range is its transfer paper re-using system, which allows for re-using the paper as a protective material for the felt mat, thus eliminating the need for kraft paper.

When printing cutout pieces with the CMD, its productivity can reach the same volume as 3 large-size format heat presses, which means a significant reduction of the space that would be used by the presses, thus optimizing the production layout in your factory and minimizing operational costs. As a safety device for the machine and the production materials being processed on it, the CMD 1800-series is fitted with a no-break system, which, in case of any power failure, prevents the equipment and the work materials from becoming burned.

### CMD 1800

No need for air compressor.



**Metalnox quality standard:** This machine features all the quality standards and know-how acquired by Metalnox since 1982 while developing technologies for the textile industry.

**Higher productivity:** The CMD 1800 has a digital speed management device that allows for a full control of the production time. The calender's production pace is continuous.

**Intelligent heating system:** Its heat distribution system by means of thermal oil makes the cylinder to remain evenly heated.

**Brazilian design and manufacturing:** Fully manufactured in Brazil, from the design up to the fabrication, assuring high standards of quality and reliability.



Emergency-stop button of easy access.



Even temperature and fabric-tensioning system  
Paper re-using system capable of feeding the fabric duly centered.



Cylinder driving control that allows for more accurate settings



Reverse driving of the fabric and transfer, allowing for correcting their path in case they are fed-in misaligned



Digital temperature control of easy access and operation



Frame designed with a support table, thus facilitating the production

Model	CMD 1800	
Mains voltage (V)	220 3-phase	380 3-phase
Rated power (kW)	18.8	18.8
Power consumption (Kw/h)	8.9	8.9
Electric current (A)	49.4	28.0
Width transfer (mm)	1700	1700
Width transfer (in)	66,92"	66,92"
Net weight (kg)	1520	1520
Gross weight (Kg)	1822	1822
Package (mm) (L x W x H)	2980 x 2100 x 1850	

# Dual Multi-Function Calender CMD 1800 S02

The Calender CMD 1800 S02 is an equipment developed and produced by Metalnox for the sublimation of synthetic fabrics. With a high production rhythm, enables work in fabric and continuous transfer as well as fabric and transfer of cut pieces.

Developed with the latest technology, the Calender CMD 1800 S02 is equipped with sensors and alarms that monitor its operation by informing the operator through audible warnings and HMI panel on the exchange of machine oil, and other possible necessary maintenance.

CMD 1800 S02



With safety as one of the pillars of the project, the CMD 1800 S02 has emergency buttons on either side of the equipment, safety cord in the feed material, safety switches on the doors of panels and redundant internal temperature player to thermal cylinder, thus ensuring their operation smoothly and safely.

Cylinder thermal 215 mm diameter and total length of 1.70 m with a 65% coverage of the cylinder. Its cylinder is coated in chrome steel with armored resistances immersed in oil, ensuring optimal temperature uniformity. To facilitate operation, the CMD 1800 S02 has integrated HMI to the PLC control panel with function of counting meters, temperature and speed. Ensuring high production rhythm, its mechanical speed reaches 3m/min. The device also has automatic alignment sensor of felt with pneumatic action keeping it properly aligned for the process, and uninterruptible power supply with battery life of approximately 30 minutes, in case of power failure and machine shutdown by temperature. The CMD 1800 Series 02 also has exclusive modular work table with possibility of customization, conveyor belt for material out the back of the device and tensioning system with active rocker providing work with elasticity fabrics.

The equipment setup is done in a simple and practical way, since the unwinding fabrics has free axle without locking. Its fabric unwinding system has cylinders in aluminum coated in carpet that ensures perfect distribution of fabric preventing wrinkling or misalignment, as well as reversals of buttons and speed of preparation for setup.



## &gt; continuation - CMD 1800 Serie 02



## Highlights

- Equipment intended for sublimation of synthetic fabrics.
- Works on fabric and continuous transfer as well as fabrics and transfer of cut pieces.
- Sensors and alarms with communication via beeps and panel HMI.
- High security: emergency buttons, safety cord to power supplies, security keys in the door panels, internal redundant temperature player to heat cylinder.
- Cylinder armored plated steel 215 mm in diameter and useful area of 1.70 m with coverage of 65% of the perimeter area.
- Integrated HMI control panel to the PLC with functions of counting meters, temperature and speed.
- Mechanical speed reaches 3 m/min.
- Sensor automatic felt alignment with pneumatic action.
- UPS with battery life of approximately 30 minutes.
- Modular work table with possibility of customization.
- Conveyor belt for material output.
- Tensioning system with active rocker providing work with tissue elasticity.
- Quick and simple setup: unwinder fabrics with free shaft and speed reversals buttons.

Model	CMD 1800 Serie 02	CMD 1800 Serie 02
Mains voltage (V)	220 3-phase	380 3-phase
Rated power (kW)	18.8	18.8
Power consumption (kW/h)	8.9	8.9
Electric current (A)	49.4	28.6
Useful area	1700	1700
Package (L x W x H mm)*	Machine: 2940 x 1790 x 1750* / Table 1.40 m: 2490 x 1640 x 1220*	
Dimensions (L x W x H mm)	2800 x 2830 x 1380 (table 1.40 m)	
Production speed (pieces/hour)	0.5 a 3	0.5 a 3
Fed-in media	Transfer paper, fabric and protective paper. Driving role for transfers into sheets and cut pieces.	
Uninterrupted Power Supply (UPS)	Yes	Yes
Work temperature	220 °C (máx.)	220 °C (máx.)
Heating principle	Electric with thermal oil	Electric with thermal oil
Recommended Kraft paper (weight/sq.m)	40 g/m <sup>2</sup>	40 g/m <sup>2</sup>
Diameter of the thermal cylinder (mm)	215	215
Net weight (kg)	1612	1612
Gross weight (kg)**	1822 **	1822 **

\* Dimensions of packaging and equipment: based on a device with a work table with 1.40 m length. Such measures may vary according to the size of the table.

\*\* Machine Shipping Weight: may vary due to weather conditions. The humidity for example, affects the weight of the timber. All equipment is heavy at time of shipment to the customer.

## Turbo JET Dryers

Developed to optimize the production layout and occupy less physical space, these machines are equipped with variable-speed drive and time/temperature controller, thus offering even heat distribution and requiring lower printing cost and lower initial investment.

**Cost saving and accuracy:** designed with an innovative insufflating system that evenly distributes pressurized air over the entire tunnel area, this equipment allows for a better usage of the machine's thermal capacity with the least temperature dissipation outside the tunnel area. In addition, the machine is equipped with a temperature management system that saves energy by activating the heating only when the monitoring system detects some temperature variation.

**Higher productivity and innovation:** Metalnox is pioneer in using the Turbo JET system, which offers more production capacity than other machines available in the market, being capable of doing 3 times more than a similar model when using plastisol ink. The speed variation of the conveyor belt can be set from 45 seconds to 3 minutes.



TJG 06/2200

TURBO JET GAS

Optional cooling system.

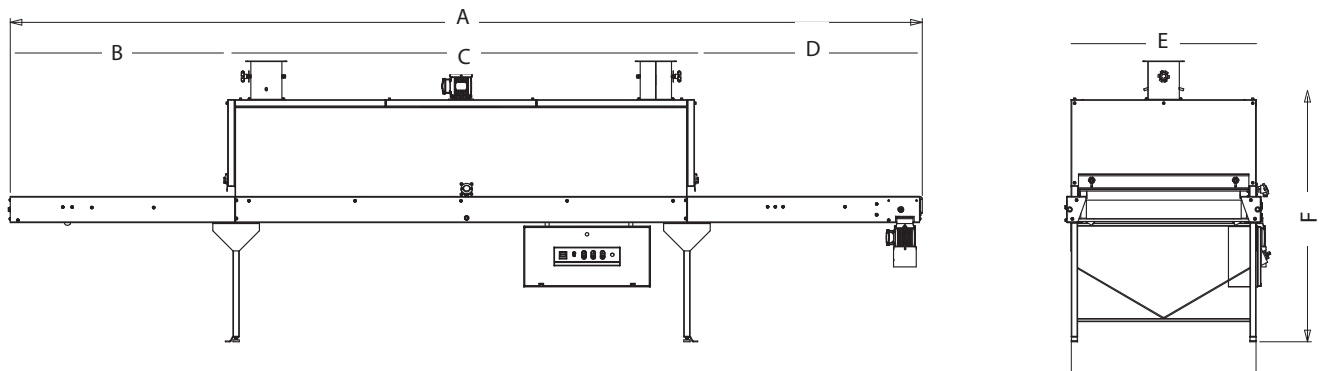


TJE 02/800

TURBO JET ELECTRIC

# Turbo JET Dryers

## Dimensions (mm)



The TJE 02/1000 dryers can be productively compared to an equipment without Turbo JET having a 3-meter long tunnel and 2-meter wide conveyor belt, thus providing for space and power saving.

Model	TJE 02/800	TJE 02/1000	TJE/TJG 03/1000	TJE/TJG 03/1800	TJE/TJG 03/2200	TJE/TJG 06/1800	TJE/TJG 06/2200
A	5080	5000	6000	6500	6500	11000	11000
B	1460	1500	1500	1400	1400	1900	1900
C	2100	2100	3000	3000	3000	6000	6000
D	1520	1500	1500	2000	2000	3000	3000
E	1000	1300	1300	2500	3000	2500	2200
F	1800	1800	1800	1900	1900	1900	1900

Model	TJE 02/800		TJE 02/1000		TJE 03/1000		TJE 03/1800		TJE 03/2200		TJE 06/1800		TJE 06/2200		TJE 09/2200		TJE 12/2200	
Mains voltage (V)	220 3-ph.	380 3-ph.	220 3-ph.	380 3-ph.	220 3-ph.	380 3-ph.	220 3-ph.	380 3-ph.	220 3-ph.	380 3-ph.	220 3-ph.	380 3-ph.	220 3-ph.	380 3-ph.	220 3-ph.	380 3-ph.	220 3-ph.	380 3-ph.
Rated power (kW)	18.7		24.8		30.8		44.8		44.8		88.8		88.8		132.8		176.8	
Power consumption (kW/h)	9.3		12.4		15		22.4		22.4		44.8		44.8		67		88.8	
Electric current (A)	49.1	28.4	65.1	37.7	80.1	46.8	117	68	117	68	233	135	233	135	350	203	467	270
Useful area (mm)	800		1000		1000		1800		2200		1800		2200		2200		2200	
Useful area (in)	31		39		39		71		87		71		87		87		87	
Net weight (kg)	650		580		1000		1000		1.50		1900		1900		2500		3000	
Gross weight (kg)	750		750		1300		1300		1500		2400		2400		3300		3800	
Production (pieces/h)	720		900		1350		2500		3100		5200		6200		9300		12300	

Model	TJG 03/1000		TJG 03/1800		TJG 03/2200		TJG 06/1800		TJG 06/2200		TJG 09/2200		TJG 12/2200	
Mains voltage (V)	220 3-ph.	380 3-ph.	220 3-ph.	380 3-ph.	220 3-ph.	380 3-ph.	220 3-ph.	380 3-ph.	220 3-ph.	380 3-ph.	220 3-ph.	380 3-ph.	220 3-ph.	380 3-ph.
Rated power (kW)	1.1		1.3		1.3		2.5		2.5		3		4	
Power consumption (kW/h)	1.1		1.3		1.3		2		2		3		4	
Gas consumption (kgGLP/h)***	0.91		1.1		1.26		2.1		2.4		3.4		4.4	
Electric current (A)	2.89	1.67	3.4	2	3.4	2	6.6	3.8	6.6	3.8	7.8	4.5	10.5	6
Useful area (mm)	1000		1800		2200		1800		2200		2200		2200	
Useful area (in)	39		71		87		71		87		87		87	
Net weight (kg)	950		1400		1200		2000		2100		2550		3200	
Gross weight (kg)	1230		1300		1550		2500		2600		3350		4000	
Production (pieces/h)****	1350		3100		3100		5200		6200		9300		12300	

\*\* Theoretical values. In practice, these values can vary 10%.

\*\*\* To obtain the consumption of natural gas of the corresponding machine in cu.meter/h, multiply the value of PLG-gas consumption by 12665.

\*\*\*\* Reference calculated based on a production of pieces in a size of 30 x 40 cm. For further information, refer to our website

# Folding Machine

High productivity, efficiency, accurate folds, cost saving and excellent cost x benefit these are only a few benefits of this machine that already is a reference in the market. With its operation fully automatic, only requires the operator to feed the work pieces in, thus requiring much less labor and offering a much faster process. 2 workers in a regular 8-hour shift can do 135% more production by using the MDM 280 folding machine. In addition, it is highly reliable because it is capable of consistent folds even for large-scale jobs.

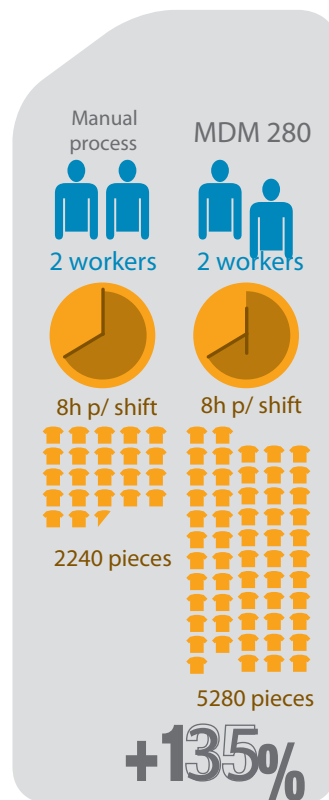


MDM 280

- Practical and of easy to handle
- Automated process
- Precise folding sequences, optimal textile industries, hotels, hospitals and laundries.
- It folds T-shirts, polo-shirts, long-sleeve shirts, coats and towels

ETM – CONVEYOR-BELT  
FOR FOLDING MACHINE

Conveyor-belt serves as an option to facilitate the work of the Folding MDM 280. Available in two versions, it makes the transportation of the piece folded and packed after leaving the machine to the storage location that is the user's option.



Model	MDM 280	ETM 150		ETM 250	
Mains voltage (V)	220 single-phase/bi-phase	220 3-phase	380 3-phase	220 3-phase	380 3-phase
Rated power (kW)	0.7	0.5	0.5	0.5	0.5
Power consumption (kW/h)	0.6	0.5	0.5	0.5	0.5
Electric current (A)	3.2	1.3	0.8	1.3	0.8
Air consumption (cu.ft/min)	3.6/100	-	-	-	-
Indicated compressor (cu.ft/min)	10	-	-	-	-
Net weight (kg)	231	66		87	
Gross weight (kg)	304	91		165	
Package (L x W x H mm)	1540 x 1140 x 1210	1734 x 848 x 600		2684 x 818 x 950	



# Metalnox Group

We exist in Brazil since 1982, manufacturing with know-how technologies and innovating solutions for the textiles industry and the photo-product manufacture. In addition, we distribute hardware and accessories for the furniture industry, and we own a business unit entirely focused on the distribution of glass.

We have adopted a leadership attitude with professionalism and excellence in all markets we are selling, which helped us to become the largest manufacturer of textile customization machines in Brazil and a reference of quality, durability and cost saving. Furthermore, we sell to more than 30 countries around the globe, with business partners and distributors in Latin America, North America, Europe, Asia, Africa and Oceania, thus taking to the world the potential, dedication and quality of the Brazilian work.

## UNIT 1 - Headquarters



Unit responsible for the production of machinery and equipment for the textile industry and digital printers. It is also responsible for storage and distribution of photo products.

## UNIT 2

### Furniture and Hardware



Unit 2 is responsible for the storage and distribution line of hardware and accessories for the furniture sector. The Metalnox Hardware has an integrated and balanced management, practice values that become even more transparency and seriousness as the business is growing.

## UNIT 3

### Northeast Business Unit



Unit 3 is responsible for distributing blades of flat glass and mirrors to the north and northeast regions of Brazil, serving the construction market of these regions. It is also responsible for logistical support and distribution of other Group companies, also moving closer to its customers.





---

SURPRISE  
THE LOOKS WITH  
A PRINT EXPRESSING  
ALL THE COLORS.

---

# metinox<sup>digital</sup>

A company of the Metalnox Group dedicated to manufacturing digital printers and printing machines direct to garment for large formats. Metalnox stands out as the first Brazilian company and the third in the world to develop equipment for printing direct on garment.

Once again, the company is looking at trends and presents to the market the best technology for the textile segment machines. The Metalnox Digital comes to confirm the expansive profile of the Metalnox Group dedicated to provide to the market, high technology and quality equipment.



**EVOX**  
mb8

Equipment for direct printing on garment.

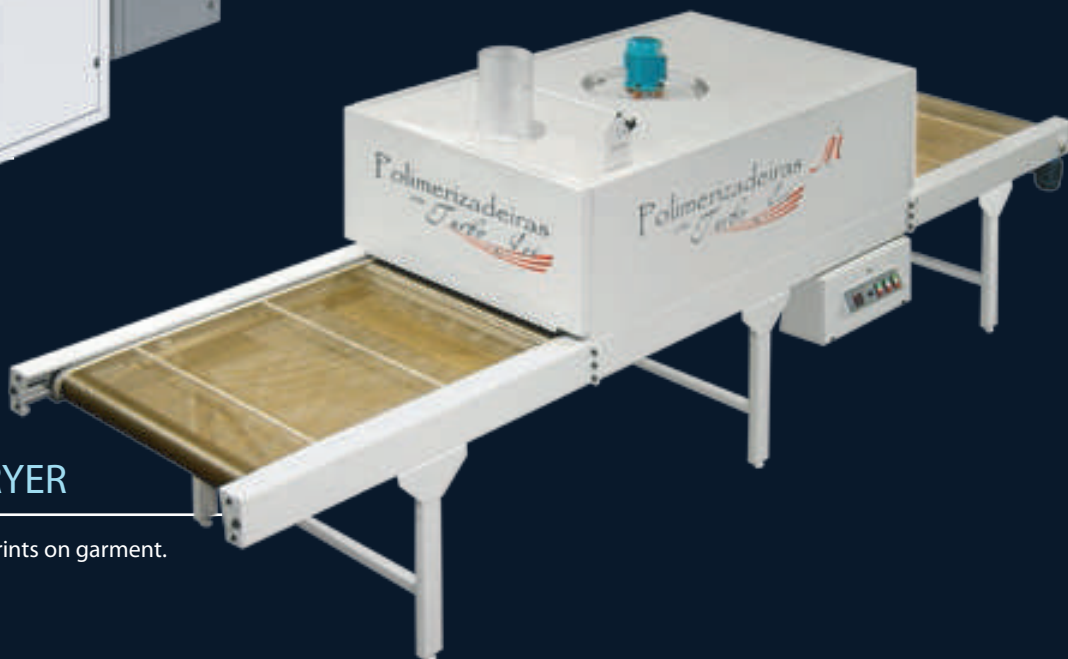
**NewePRINT**  
Now **SuperSTRONG**

Industrial printer for sublimation.



**MPT**

Pre-treatment machine.  
Essential for the operation of the direct printer Evox Mtx8.



**Turbo JET DRYER**

Indicated for curing prints on garment.



For more details, please contact :



Saudi Arabia Office  
Jeddah Prince Majed St.  
Tel: +966 12 673 4061  
Fax: +966 12 673 4312  
[www.goldenMarch.com](http://www.goldenMarch.com)  
[info@goldenmarch.com](mailto:info@goldenmarch.com)



cód.: 36987-R4 / Set/2016

